

Installing Holocentric Modeler 6.1

Supported Operating Systems: Windows XP (SP2 or higher), Windows Vista (SP1 or higher)

Note: If you intend to use Modeler to connect to a Modelpedia Server you must have the .NET 3.5 Framework with Service Pack 1 installed on your machine. If you do not have this software installed Modeler will still function as a standalone application, but will be unable to connect to Modelpedia. The .NET 3.5 Framework with SP1 can be downloaded from the [Microsoft website](#).

Upgrading from Modeler 5.x versions

By default, Modeler 6 is installed to a different directory path than Modeler 5 and both applications operate independently. After installing Modeler 6 you can choose to uninstall Modeler 5 versions from **Add/Remove Programs** in the Control Panel or leave them installed. Both versions can be run simultaneously. Only one version of Modeler 6.x can be installed at any time.

Modeler 6 uses a new file format (.olix) and libraries created with version 6 cannot be opened using version 5.

Libraries created using version 5 (.oli) must be converted to the version 6 format (.olix) before they can be opened using version 6.

For information on how to convert your libraries, please speak to a Holocentric Consultant who can assess your situation and provide the best means to achieve a successful conversion. Library conversion can range from very simple to extremely complex depending on your prerequisite structure.

Upgrading from earlier Modeler 6 versions

Only one version of Modeler 6.x can be installed on your machine at a time. When you launch a Modeler 6 installation, earlier versions of Modeler 6 will be automatically uninstalled before the current installation proceeds. Modeler license keys will not be uninstalled, nor will the user cache be deleted. This is to prevent accidental data loss especially with libraries checked out locally from Modelpedia which may have been modified. Even so, as a precaution, **users should check in all their libraries to Modelpedia before upgrading their Modeler client.**

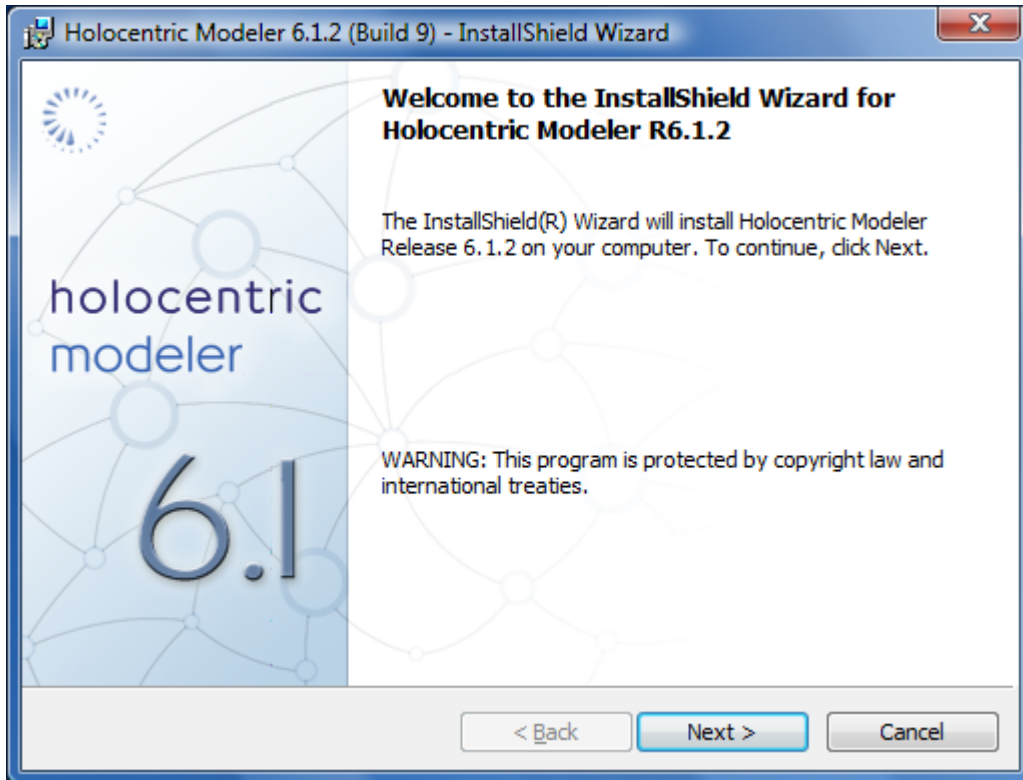
Clean Installation

If you have never installed any version of Modeler on your machine there are no special actions to perform prior to launching the installation. If you encounter any issues that prevent installation please contact Holocentric Support.

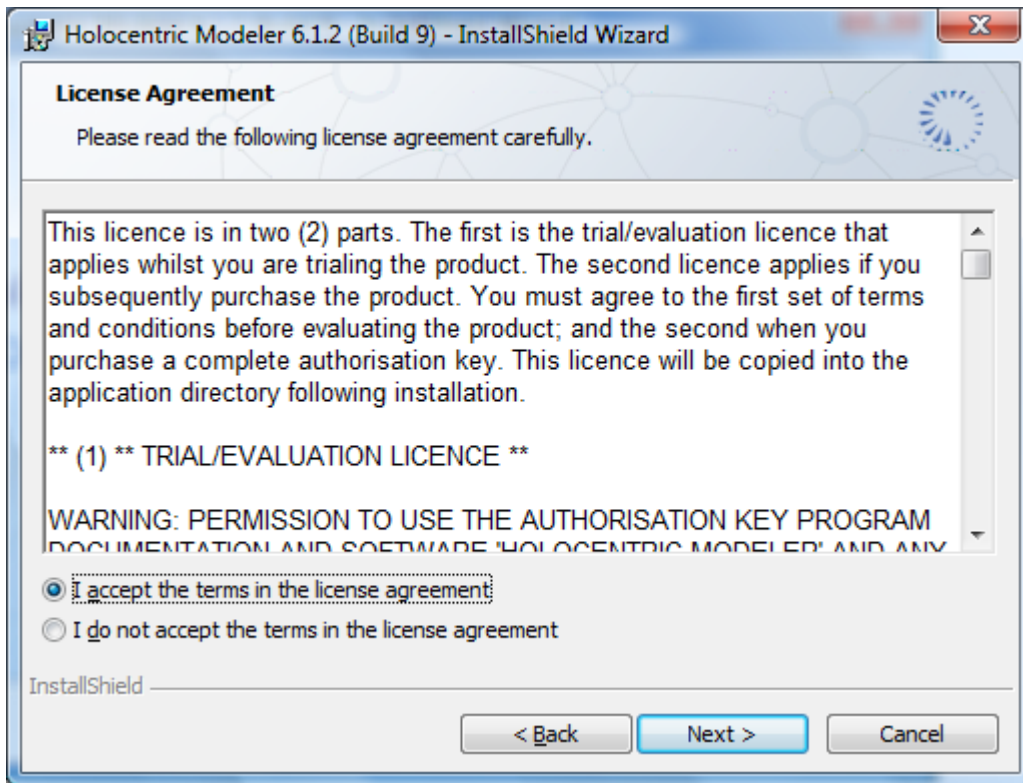
Installation Walkthrough

To launch the installation, double click the file HOMD_R604.exe

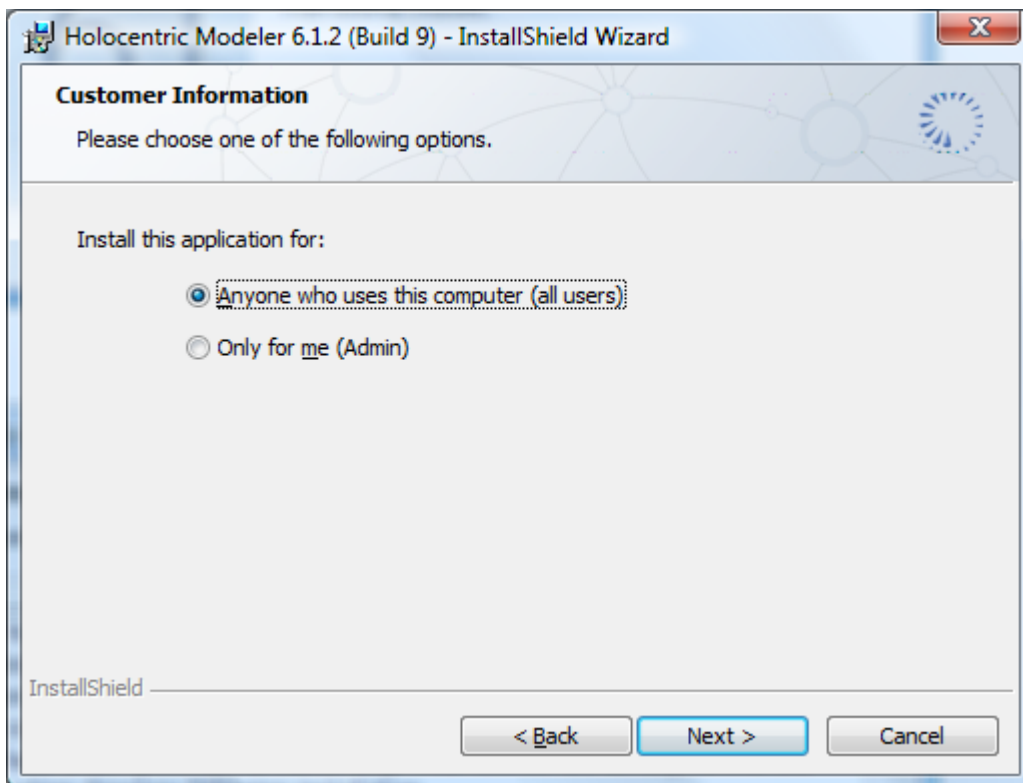
Click Next and read through the License Agreement



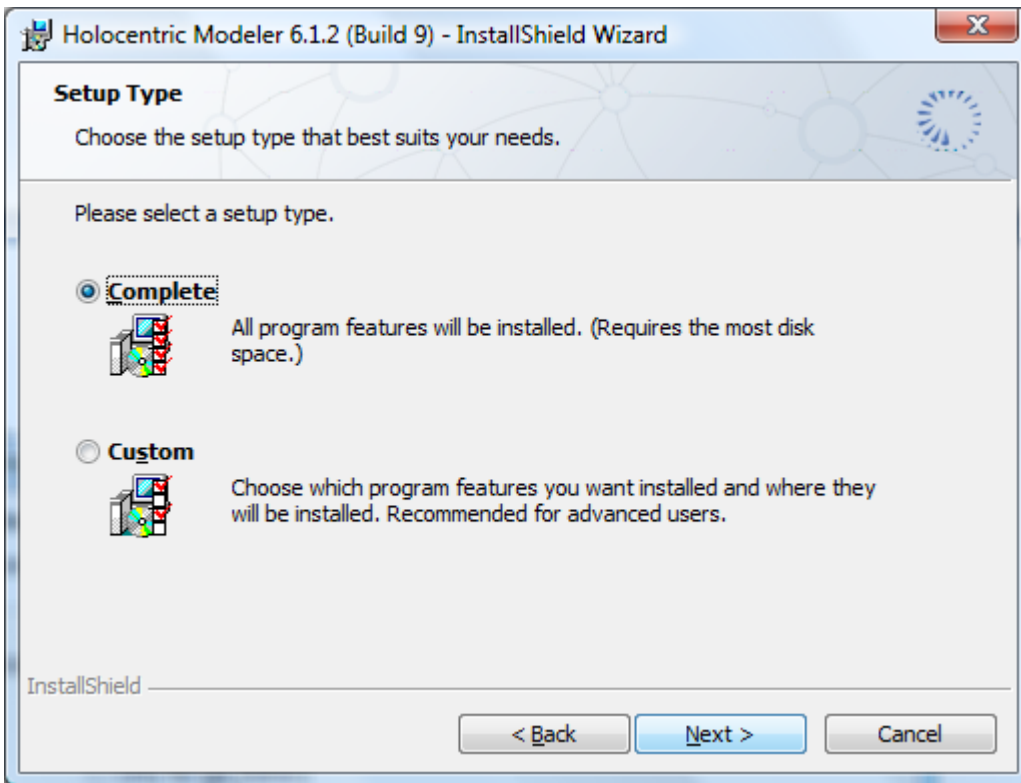
Accept the terms in the license agreement and click Next to continue



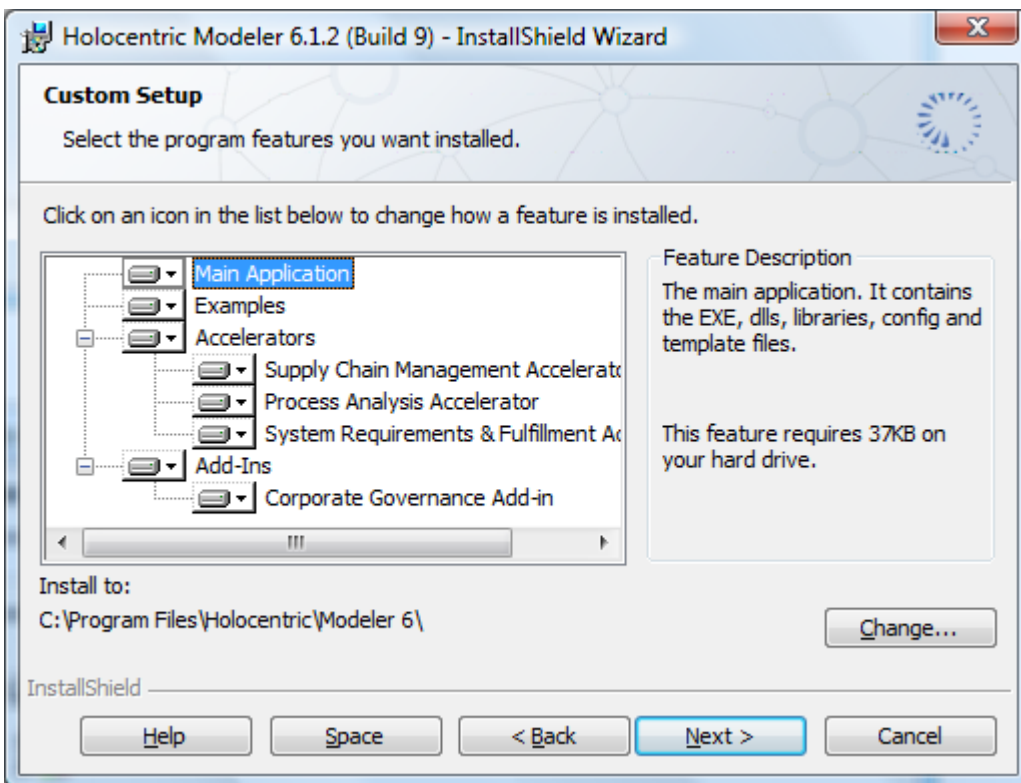
If you share your computer with other users who will also use Modeler, select the first option. Otherwise select **Only for me**.



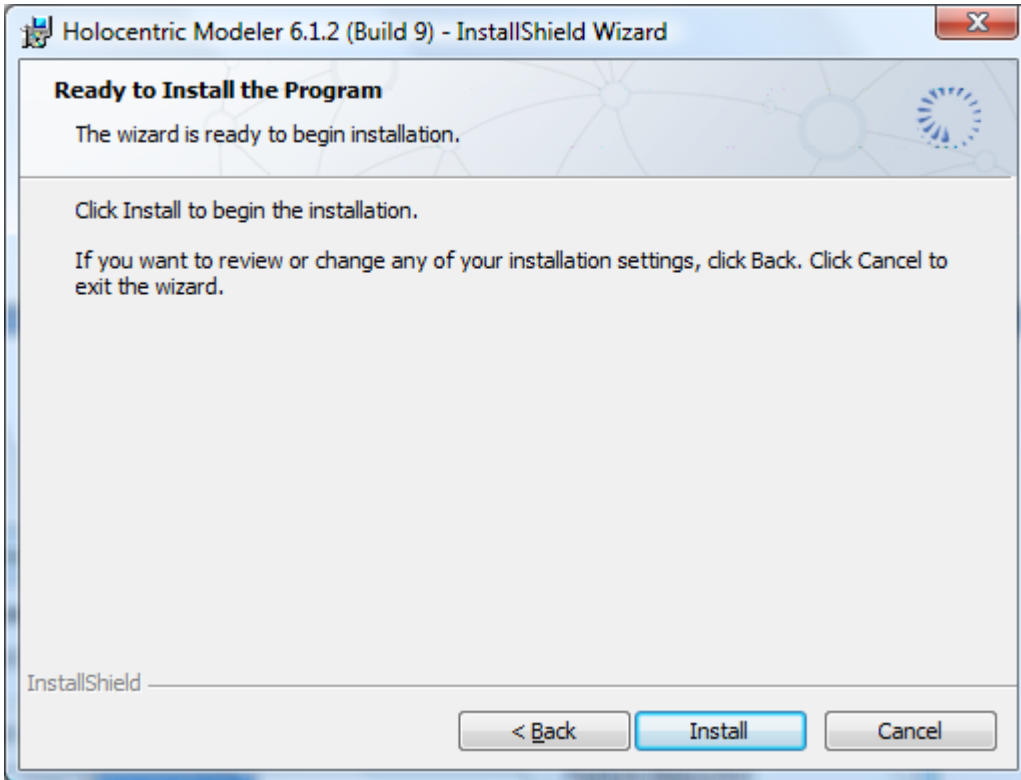
Unless you have reason to choose otherwise, it is best to use the **Complete** option



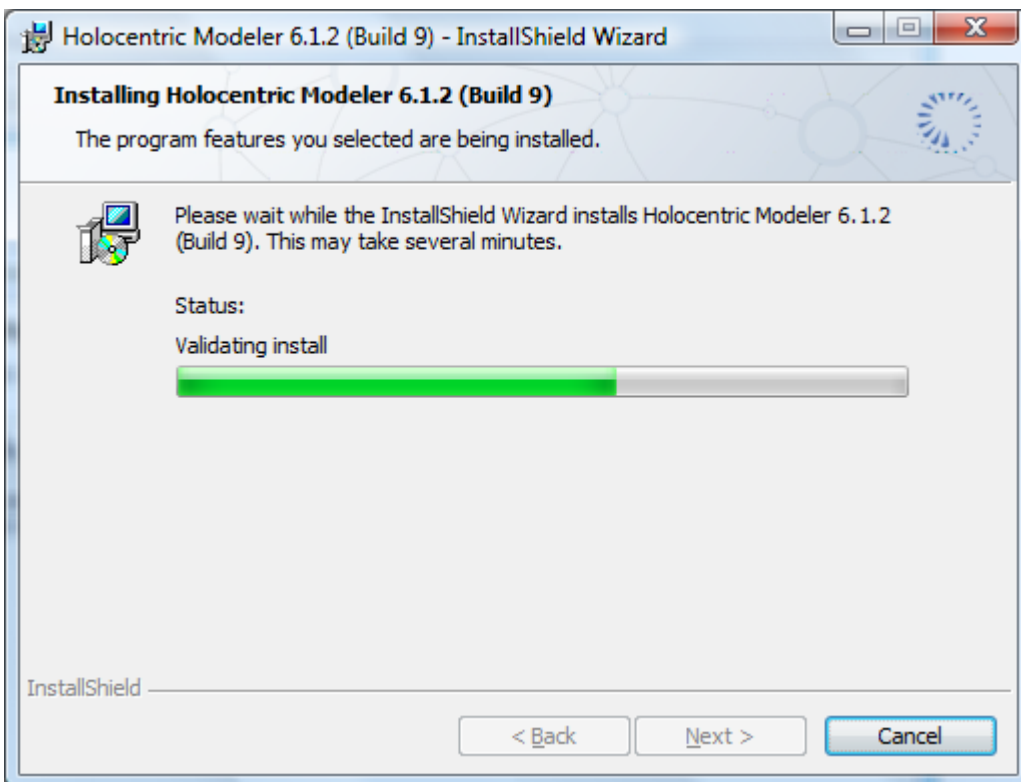
If you choose **custom**, you will be able to specify which components to install as well as change the default installation path to another location



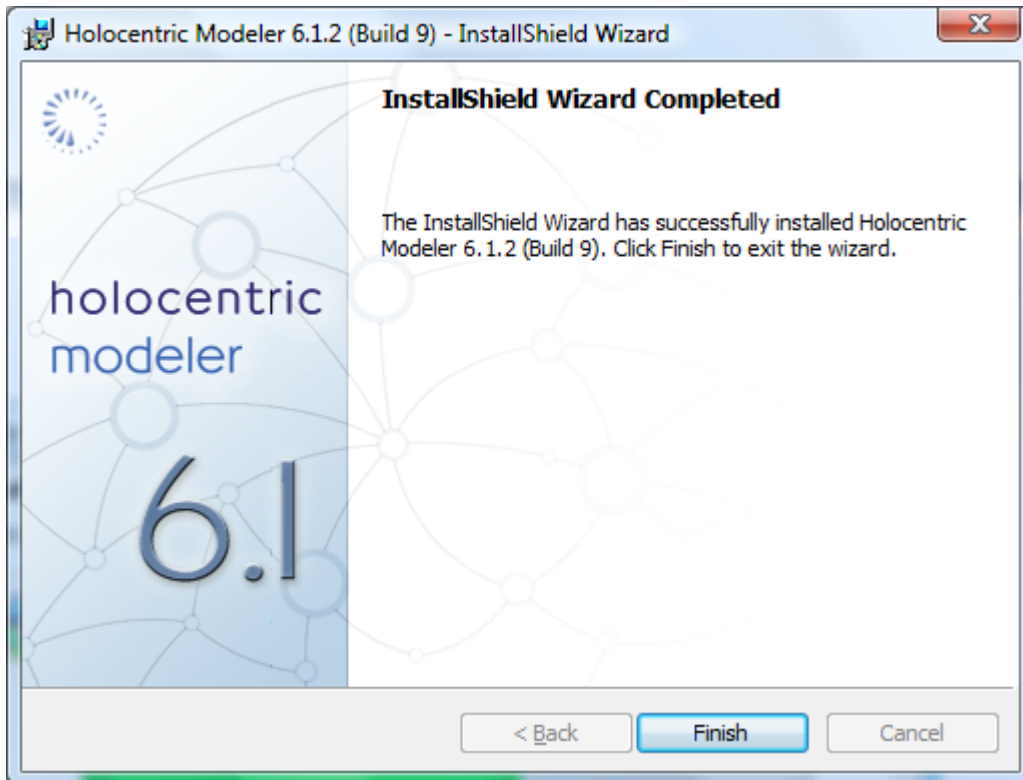
When you have made your decisions, click **Next** and then **Install**



If you have a previous version of Modeler 6.x installed, setup will now uninstall that version before proceeding to install the current version



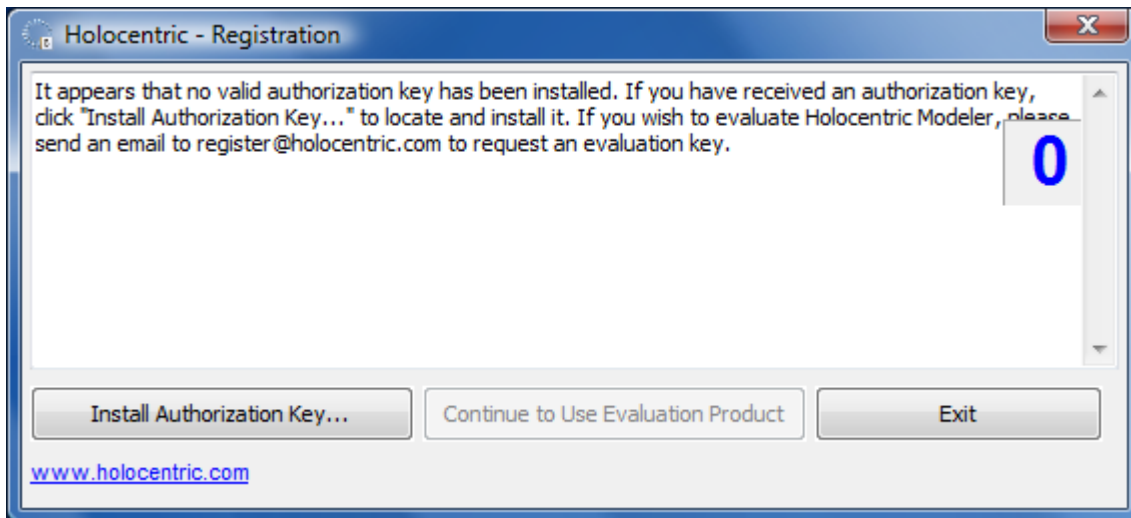
The installation process is very quick, usually taking less than 5 minutes. When the installation is complete, click Finish.



You will see a shortcut to the application on your desktop. Double Click this shortcut to Launch Modeler.

Installing a new license key

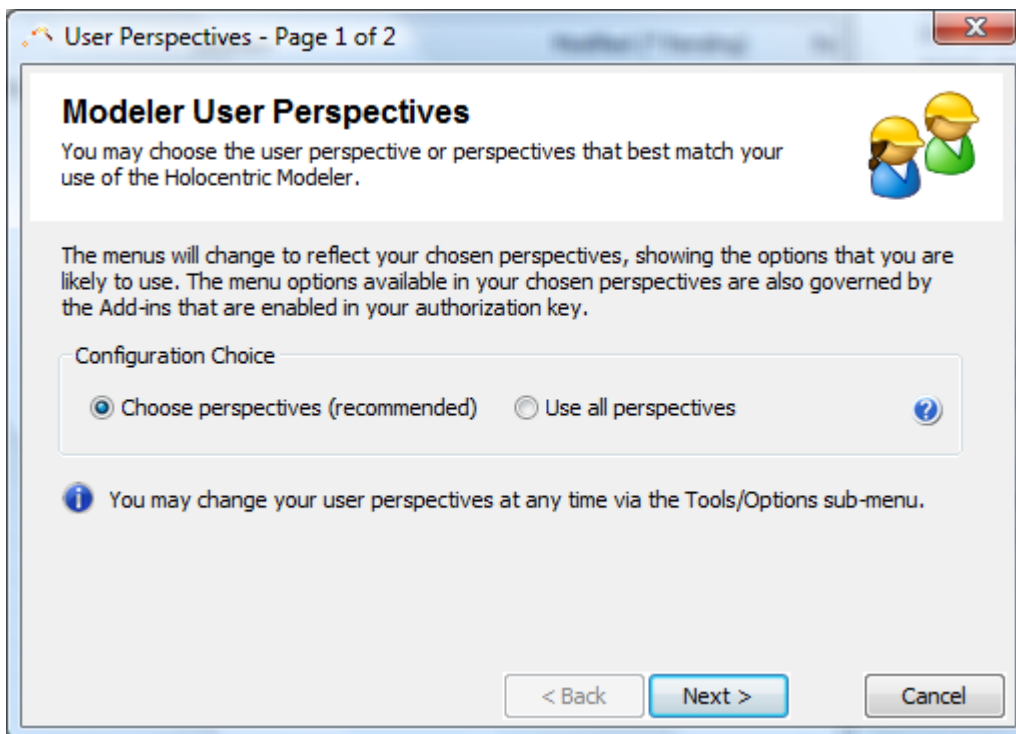
If your license key file (key.ini) was in the same directory as the installer file (homd_r604.exe), then your key should automatically be installed. Otherwise you will be prompted to install your license key using the **Install Authorization Key...** button and browsing to your **key.ini** file.



Tip: If you are using the Windows Vista Operating System with User Account Control (UAC) enabled and you experience difficulty installing your license key, please manually copy your key.ini file directly into the license folder which is located under the Modeler installation directory (i.e. c:\program files\holocentric\modeler\license).

Choosing your Perspective

The first time you launch Modeler, you will be prompted to choose one or more User Perspectives. The User Perspectives you choose will determine what menu items, tools and other options are available to you with the intention of presenting the most useful/relevant subset for the task you are undertaking. If you are not sure what perspective/s you should be choosing, it is recommended to select 'Use all perspectives'.



You can always change your perspectives later via the **Tools → Options → User Perspectives...** menu.

